

Vacuum Finishing Table.

Model : VF 120

Rectangular Table Top.
Extended Exhaust Duct with
Rack, Tube-light & Storage.



Extended Exhaust Duct. Flourescent Tube light.



Moist air is exhausted upwards with extended duct. Garment shelf with concealed flourescent tube light is mounted on to the duct at a height so that the table top is uniformly illuminated & the garment shelf can be conveniently used. **Clean environment. Operator's convenience.**

Centrifugal Suction Blower.



Connected to table top. Mounted on a high torque electric motor for quick start. Activated by spring loaded, full length foot pedal. Low noise & vibration less performance. **Efficient moisture suction. Quick drying of table top & padding**

Silicon Padding & S.S. Table Heater.

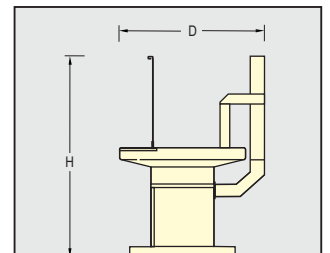
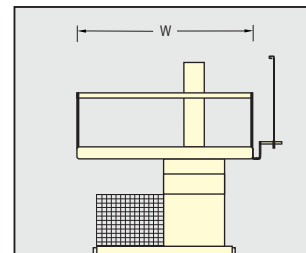
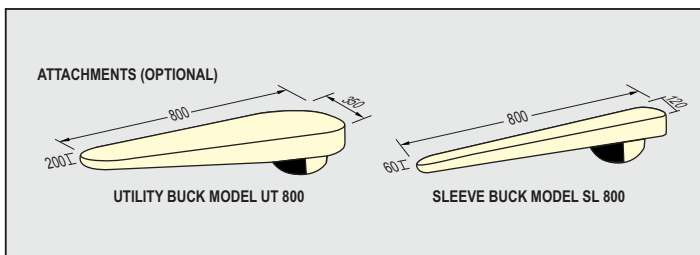


Perforated steel sheet has thermostatically controlled electric heater underneath covered by high porosity silicon foam padding & heat resistant cloth. **Efficient & Effective Airflow. Padding remains dry at all times.**

Ergonomically Placed Mesh Storage.



Metal mesh storage provided below which is ergonomically placed. The user gets an advantage to put in load as & how convenient. This is an add on benefit to the user which we provide as a standard feature.



MODEL	TABLE TOP SIZE	SUCTION MOTOR	OVERALL DIMENSIONS W x D x H	NET WT	CRATED WT	CRATED SIZE W x D x H	CRATED VOLUME
VF 120	1200 x 750	0.37 KW	1230 x 900 x 1640	110 Kg	150 Kg	1430 x 1090 x 1300	2.02 M³

CONSUMPTION & ELECTRIC LOAD ARE FOR THE PURPOSE OF DESIGNING UTILITIES. IMAGES DO NOT ALWAYS SHOW THE OFFERED MACHINE.
ALL DIMENSIONS ARE IN MM. STANDARD MACHINES OPERATE ON 220V ±5%, 1 PHASE, 50Hz, AC ELECTRIC SUPPLY. SPECIFICATIONS ABOVE ARE SUBJECT TO CHANGE WITHOUT NOTICE.